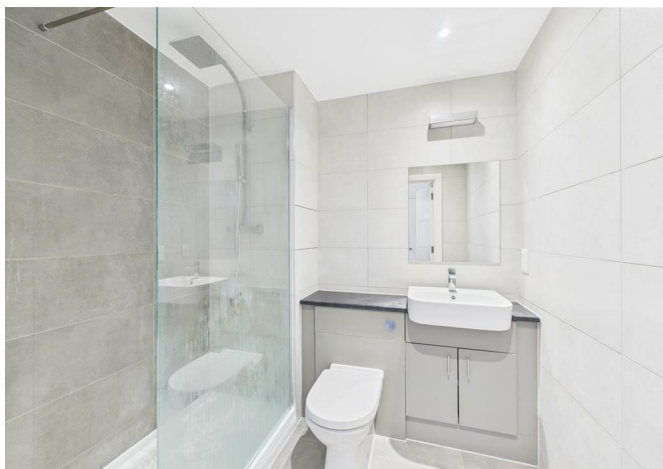
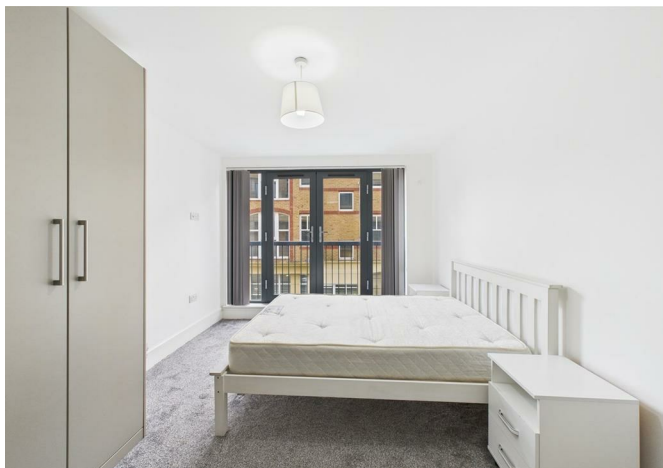
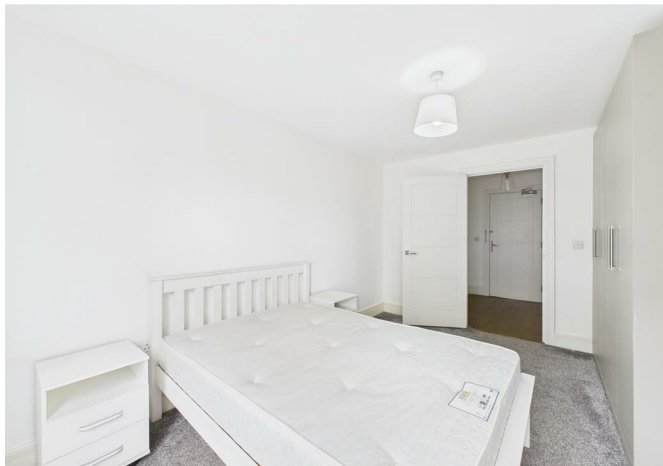




42344234 The Grove, Pechiney House, Slough, Buckinghamshire, SL1 1QP
£1,200



42344234 The Grove, Pechiney House, Slough, Buckinghamshire, SL1 1QP

£1,200

Residents of Pechiney House can enjoy their time around the city centre in Slough and take advantage of several stations and transport links. Located 0.4 miles away, tenants can access Slough train station that provides regular service into the city centre.

There are multiple buses passing by this apartment complex, including #2, 3, 4, 4A, 6, 7, 8, 8A, 10A, 15, 63, 68, 81, 335, 582, 702, and 703.

Within 2 miles, there are many shopping malls for residents to enjoy including Royal Shopping Centre, The Village Shopping Centre, Queensmere Observatory Shopping Centre, Home Living, and The Beard Shack. Photos are for illustration purposes only.

Description

Situation



Furnished

Council Tax Band: C

Available:

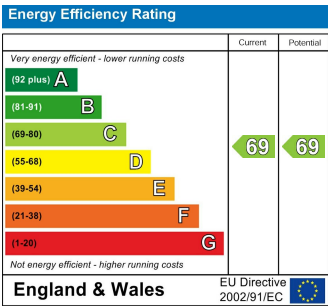
Floor Plans



Area Map



Energy Performance Graph



These particulars, whilst believed to be accurate are set out as a general outline only for guidance and do not constitute any part of an offer or contract. Intending purchasers should not rely on them as statements of representation of fact, but must satisfy themselves by inspection or otherwise as to their accuracy. No person in this firms employment has the authority to make or give any representation or warranty in respect of the property.